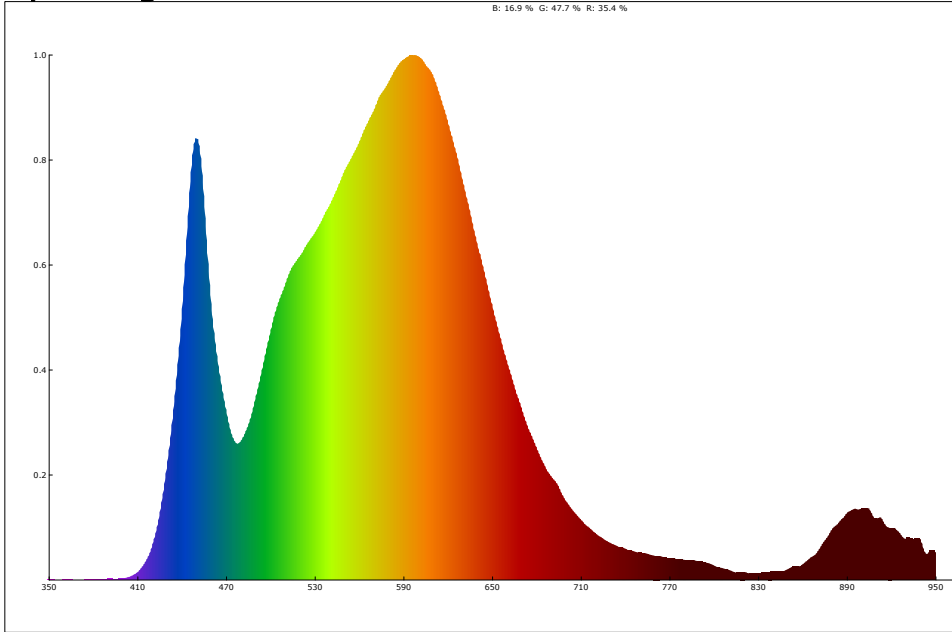
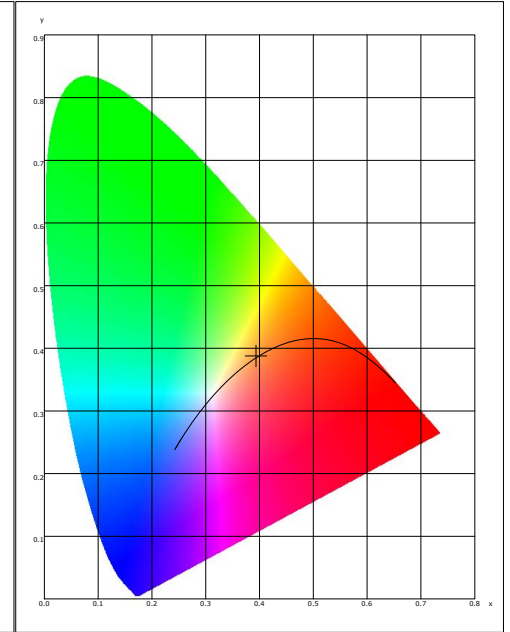


LED Test Report

Spectrogram



CIE1931



Color Parameter:

x: 0.3936 y: 0.3875 u: 0.2294 v: 0.3388 u': 0.2294 v': 0.5082
 CCT: 3744 K R_ratio: 35.4 % G_ratio: 47.7 % B_ratio: 16.9 %

Ra: 82.5 AvgR: 76.0
 R1: 80.4 R2: 88.6 R3: 95.4 R4: 81.7 R5: 80.9 R6: 85.1 R7: 85.5 R8: 62.8
 R9: 5.9 R10: 73.7 R11: 80.7 R12: 66.0 R13: 82.2 R14: 97.5 R15: 73.8

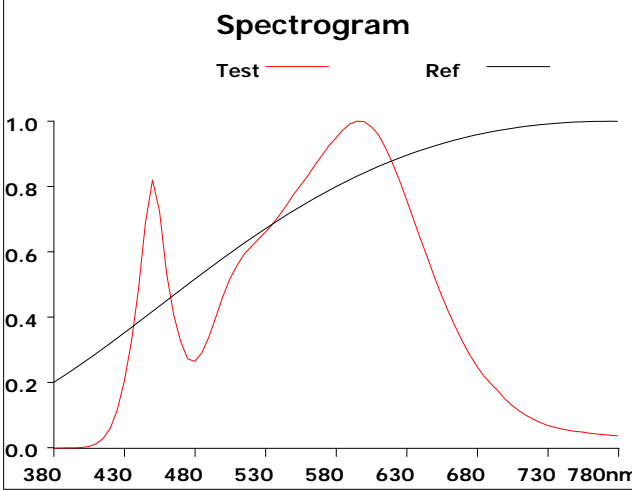
Illum: 272534.875 lx	PeakWave: 599.6 nm	CentralWave: 577.1 nm	DominantWave: 579.4 nm
CentroidWave: 586.8 nm	HalfWidth: 149.2 nm	DarkSignal: 5870.0	PeakSignal: 46073.0
purity: 34.4 %	IntegTime: 2.1 ms	SDCM: 5.6	AvgR: 76.0
duv: 0.00136	Ee: 217.5 w/m ²	fc: 25234.7	S/P: 1.6
CIE1931 X: 100162.3	CIE1931 Y: 98603.8	CIE1931 Z: 55726.7	CQS: 81.5
Rg: 95.8	Rf: 82.9	YPPFD: 876.957 umol/m ² /s	PPFD: 986.706 umol/m ² /s
PPFD(400-700nm): 986.706 umol/m ² /s	PPFDv: 0.198 umol/m ² /s	PPFDb: 157.942 umol/m ² /s	PPFDg: 452.525 umol/m ² /s
PPFDr: 376.239 umol/m ² /s	PPFDfr: 43.533 umol/m ² /s	PPFDir: 5.796 umol/m ² /s	Ep: 217.474 w/m ²
E(400-700nm): 198.662 w/m ²	Euv: 0.059 w/m ²	Eb: 38.991 w/m ²	Eg: 92.459 w/m ²
Er: 67.212 w/m ²	Efr: 6.755 w/m ²	Eir: 11.998 w/m ²	Ech-A: 16.317 w/m ²
Ech-B: 8.651 w/m ²	PAR: 198.662 w/m ²	Erb Ratio: 1.720	Erfr Ratio: 14.175
KPARV: 1.66269 umol/m ² /s/Klx	PUR: 126.6 w/m ²	Tmax: 2.6 S	Kbv: 0.6
EUVA) : 0.0 W/m ²	B (λ)) : 38.5 W/m ²	EIR: 4.3 W/m ² sr	R(λ) : 309.0 W/m ² sr
Eavg: 272534.9 lx	Emax: 305383.5 lx	Emin: 218715.1 lx	SamplingTime: 50.0 ms
FluctuationDepth: 15.8 %	FlickerPercent: 16.5	FlickerIndex: 0.0	FlickerFrequency: 100.1 Hz
FlickerIndex: 15.8	MD: 15.8	Transmittance: 100.0	

Product model: Lisun LMS-6000SF
 Product number: LED
 Tester: Jacky
 Remarks: N/A

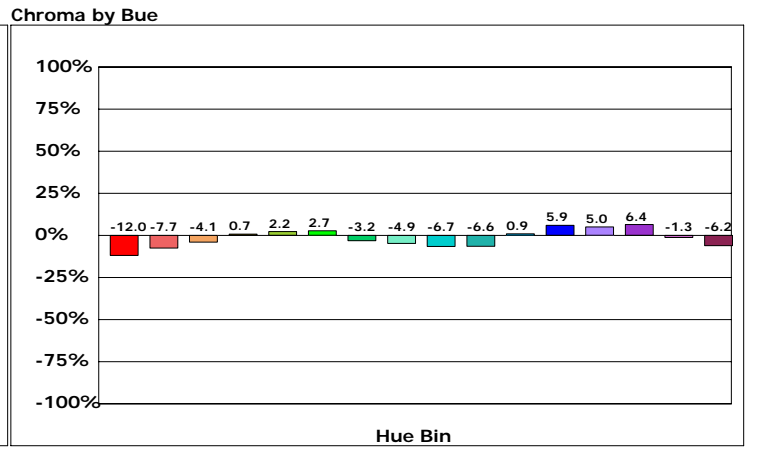
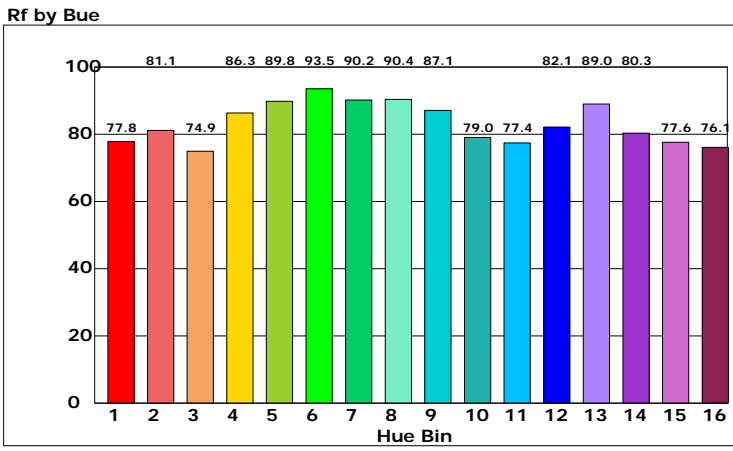
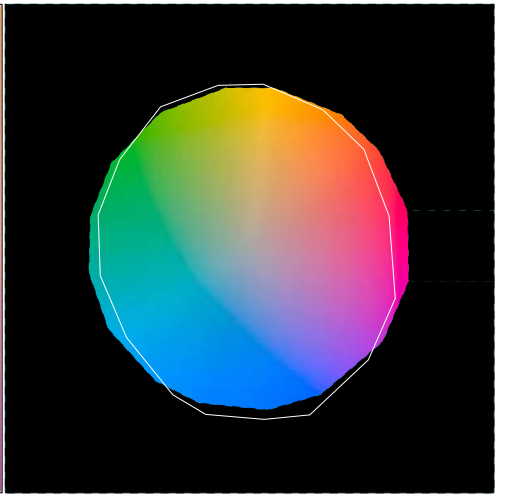
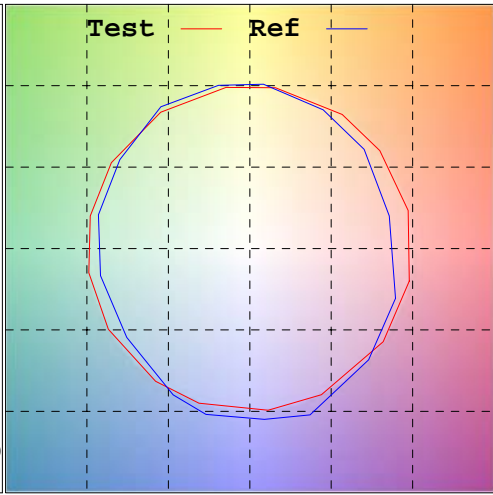
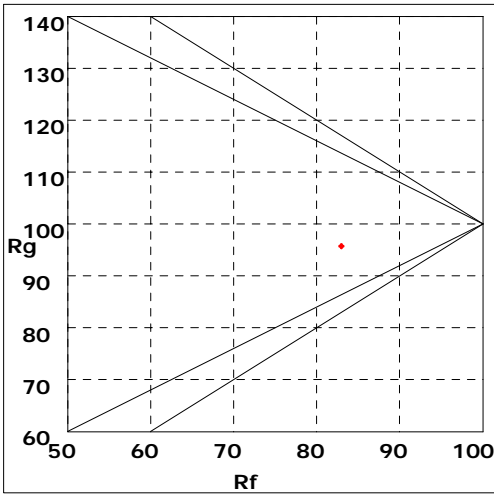
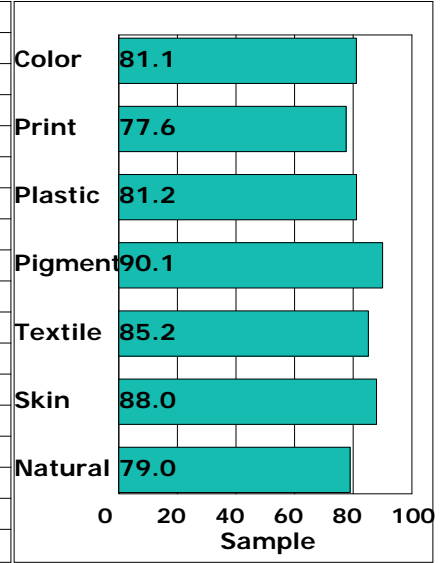
Manufacturer: LISUN GROUP
 Test unit: LED
 Date of observation: 20231013

LED Test Report

Rf: 82.9 CCT: 3744K u': 0.2294
 Rg: 95.8 LER: 0.0 Duv: 0.00136 v': 0.5082



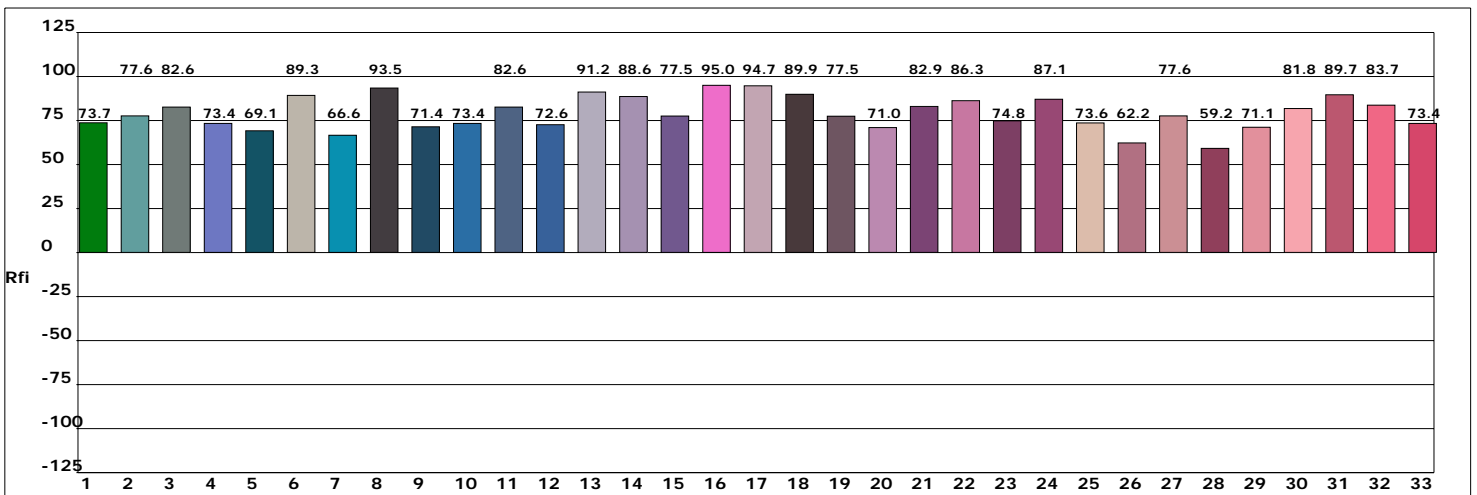
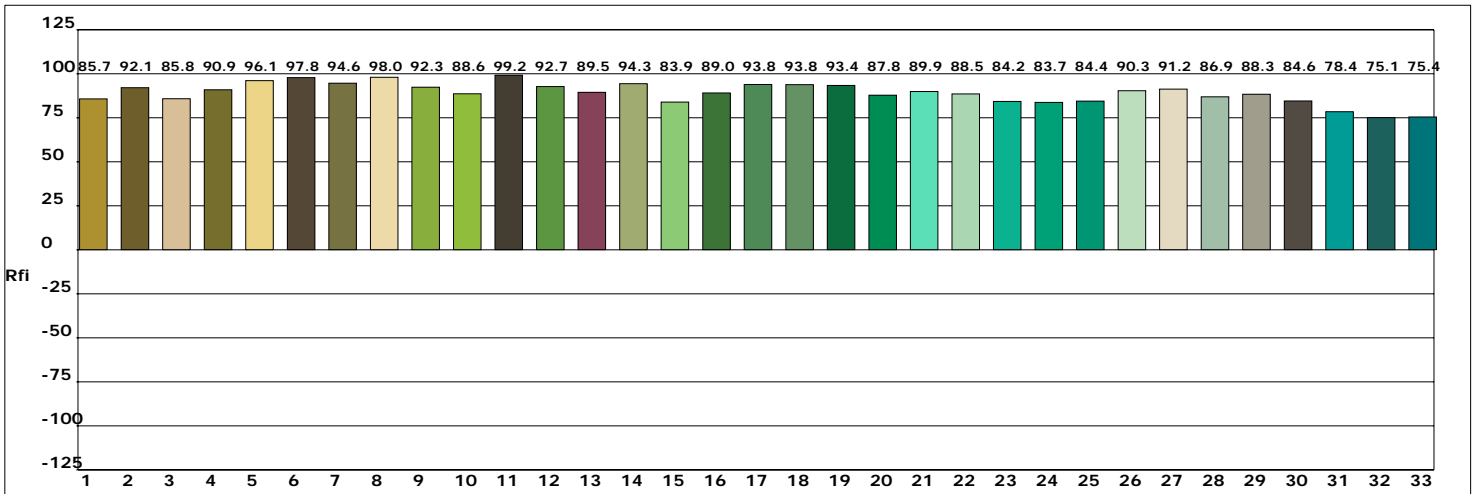
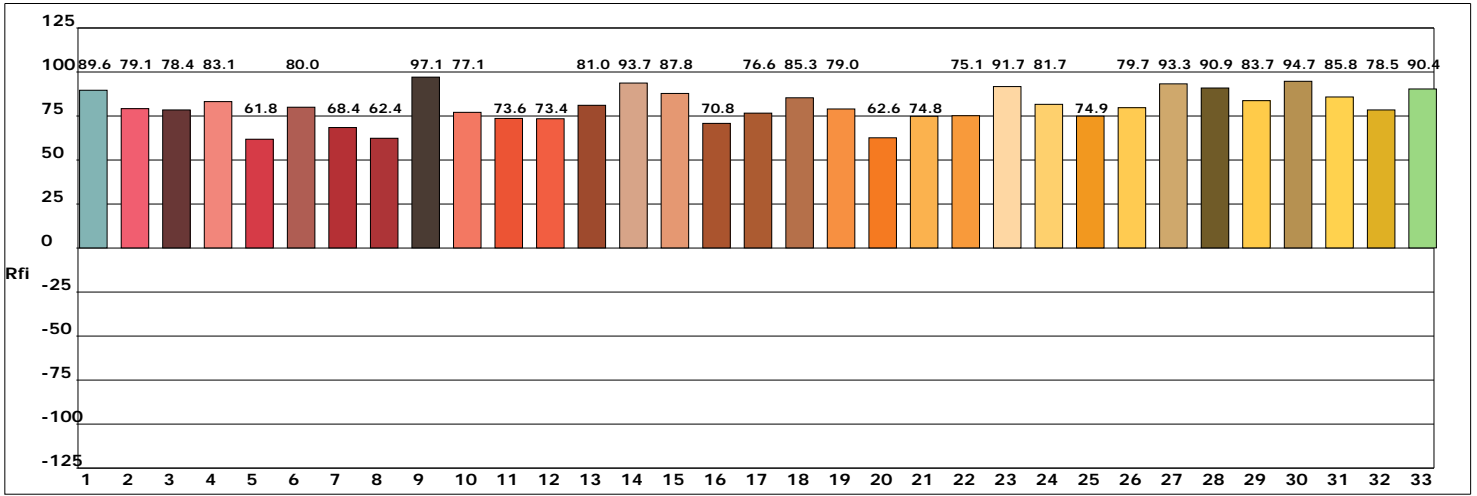
Hue Bin	Rf	Chroma	Hue
1	77.8	-12.0%	-1.0%
2	81.1	-7.7%	6.0%
3	74.9	-4.1%	11.4%
4	86.3	0.7%	7.6%
5	89.8	2.2%	4.3%
6	93.5	2.7%	-1.8%
7	90.2	-3.2%	-4.5%
8	90.4	-4.9%	-1.7%
9	87.1	-6.7%	3.1%
10	79.0	-6.6%	10.5%
11	77.4	0.9%	13.7%
12	82.1	5.9%	5.6%
13	89.0	5.0%	-3.3%
14	80.3	6.4%	-12.6%
15	77.6	-1.3%	-14.2%
16	76.1	-6.2%	-12.1%



Product model: Lisun LMS-6000SF
 Product number: LED
 Tester: Jacky
 Remarks: N/A

Manufacturer: LISUN GROUP
 Test unit: LED
 Date of observation: 20231013

LED Test Report

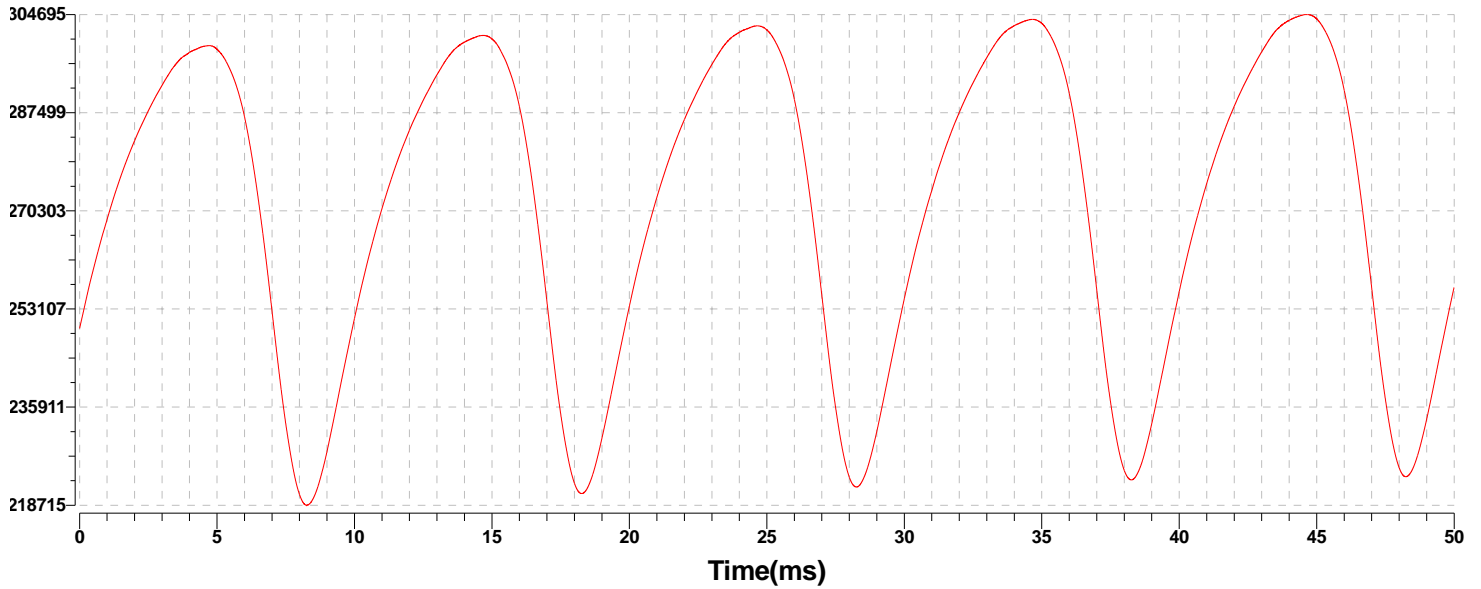


Product model: Lisun LMS-6000SF
 Product number: LED
 Tester: Jacky
 Remarks: N/A

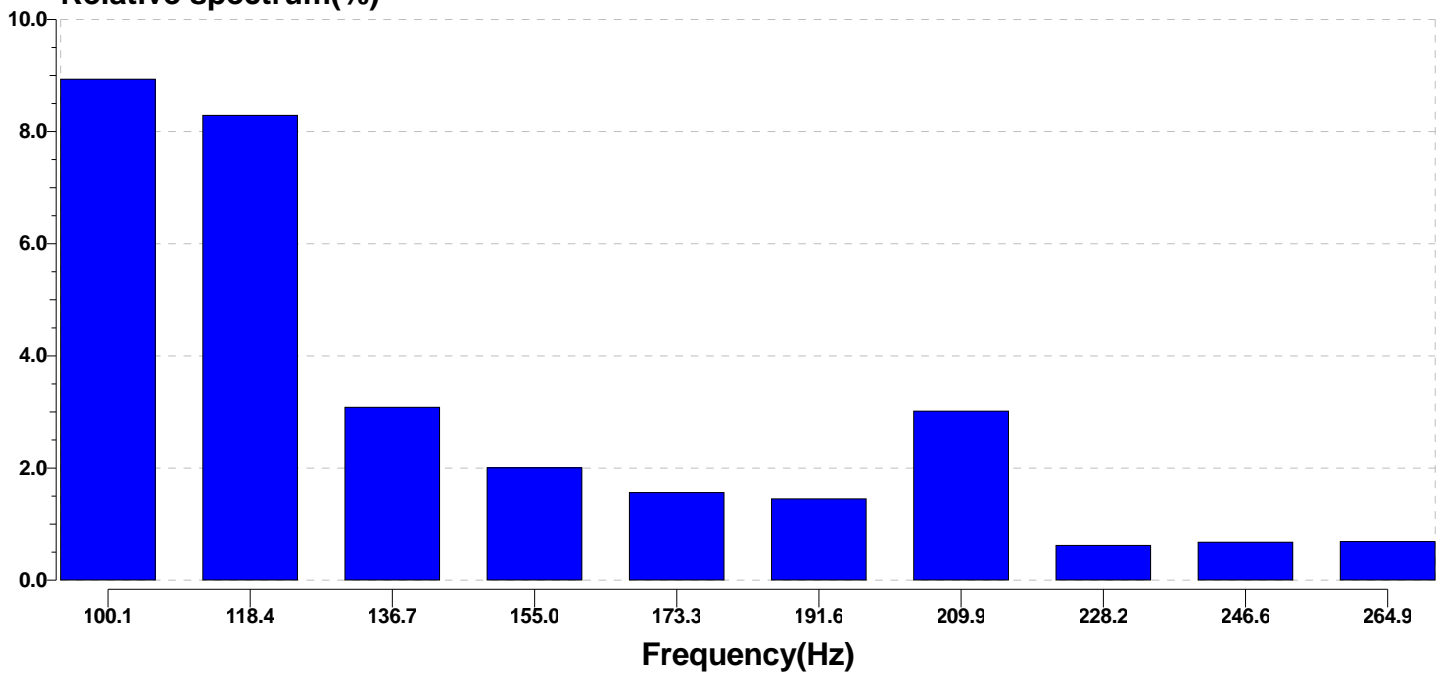
Manufacturer: LISUN GROUP
 Test unit: LED
 Date of observation: 20231013

LED Test Report

illuminance(lx)



Relative spectrum(%)



Product model: Lisun LMS-6000SF
 Product number: LED
 Tester: Jacky
 Remarks: N/A

Manufacturer: LISUN GROUP
 Test unit: LED
 Date of observation: 20231013