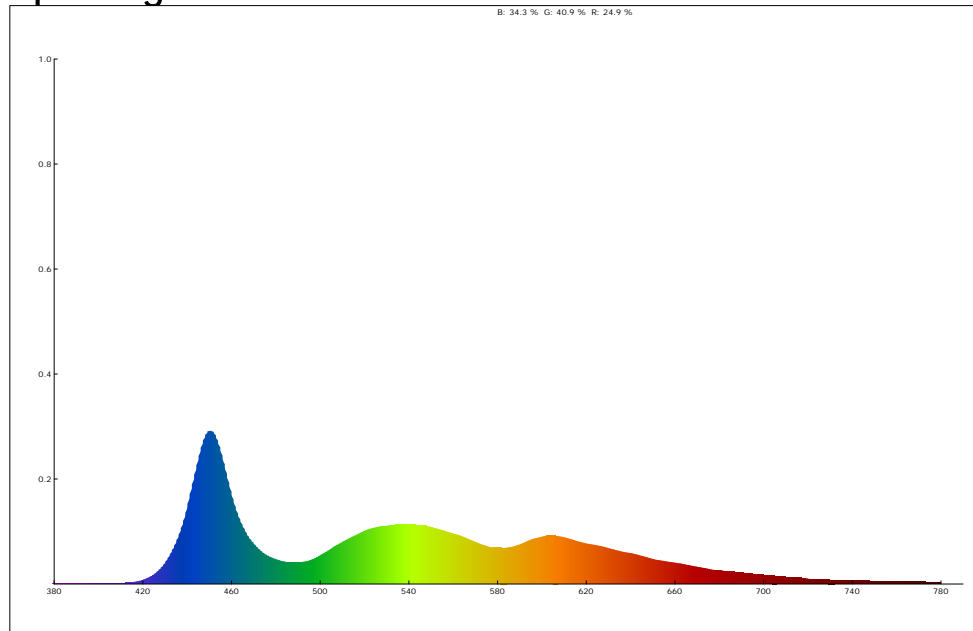
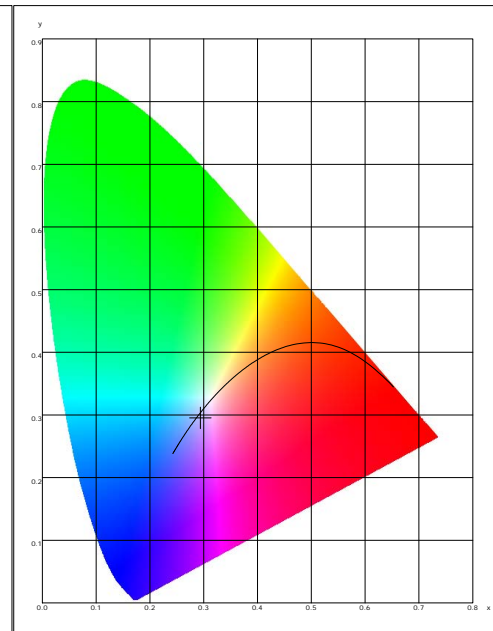


### LED Test Report

#### Spectrogram



#### CIE1931



#### Color Parameter:

x: 0.2939      y: 0.2951      u: 0.1975      v: 0.2974      u': 0.1975      v': 0.4461  
 CCT: 8381 K      R\_ratio: 24.9 %      G\_ratio: 40.9 %      B\_ratio: 34.3 %

Ra: 88.5      AvgR: 84.7  
 R1: 93.2      R2: 88.0      R3: 74.3      R4: 88.3      R5: 92.4      R6: 82.8      R7: 93.5      R8: 96.1  
 R9: 80.2      R10: 67.0      R11: 86.7      R12: 53.9      R13: 92.8      R14: 83.9      R15: 96.9

Luminance: 90.360 cd/m <sup>2</sup>	PeakWave: 450.5 nm	CentralWave: 451.1 nm	DominantWave: 477.5 nm
CentroidWave: 539.9 nm	HalfWidth: 21.5 nm	DarkSignal: 3059.0	PeakSignal: 55908.0
purity: 16.9 %	IntegTime: 134.1 ms	SDCM: 17.2	AvgR: 85.7
duv: -0.00451	Radiance: 0.3 mW/m <sup>2</sup> /sr	fc: 8.4	S/P: 2.4
CIE1931 X: 131.8	CIE1931 Y: 132.3	CIE1931 Z: 184.3	CQS: 81.4
Rg: 101.0	Rf: 81.6	Foot Lambert(fl): 26.4	Lambert(fl): 0.3 L
Transmittance: 100.0			

#### Electrical parameters:

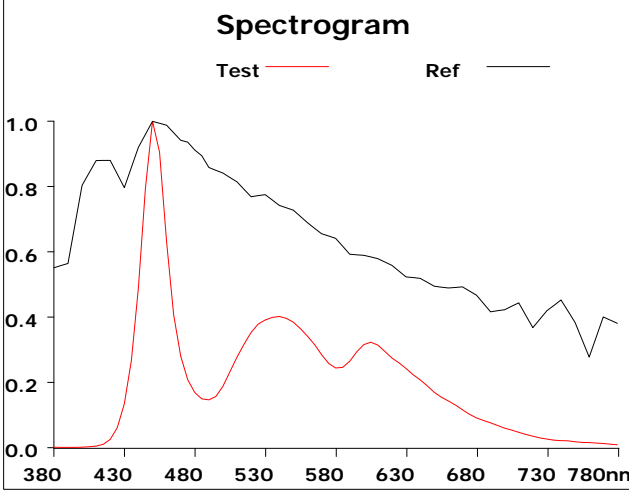
Efficacy = 0.000      Efficiency = 0.000      I<sub>Effi</sub> = G  
 U = V      I = A      P = W      PF =

Product model: Lisun LMS-6000L  
 Product number: LED  
 Tester: Jacky  
 Remarks: N/A

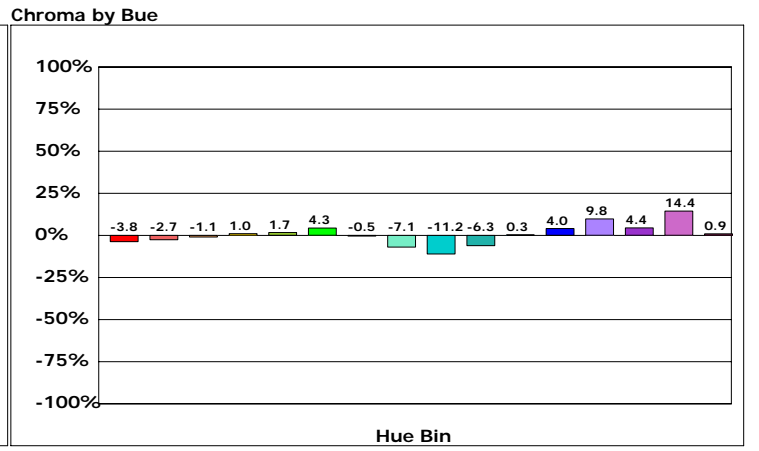
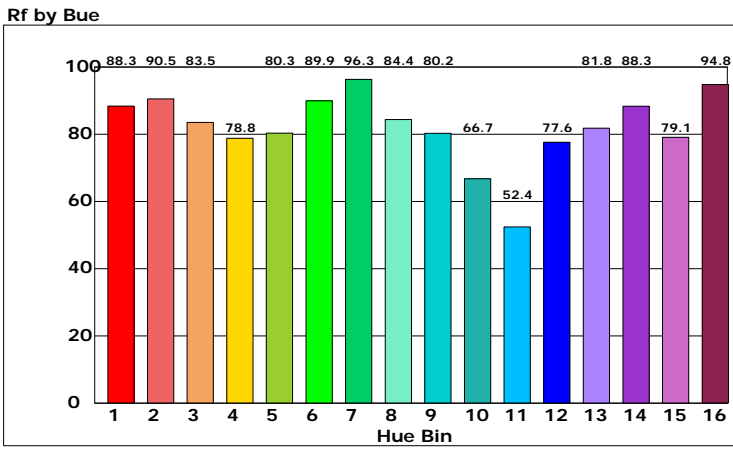
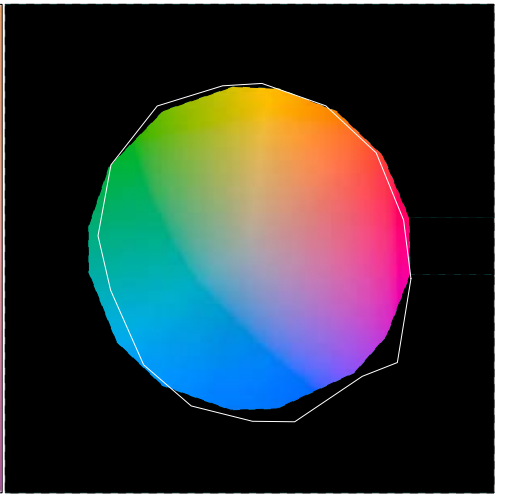
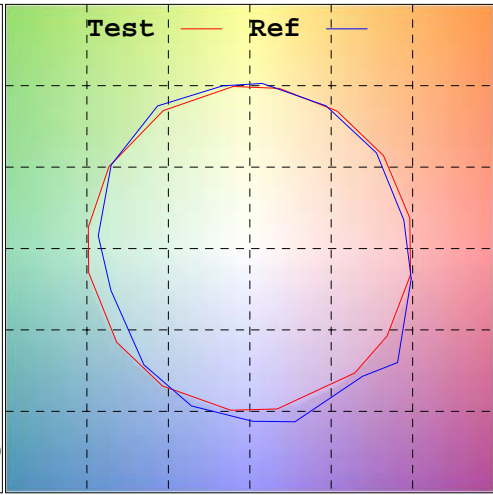
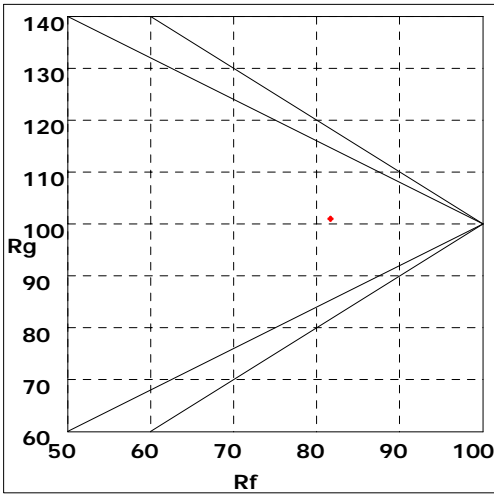
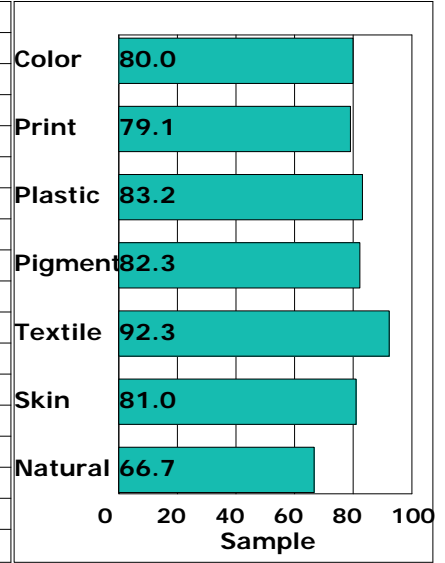
Manufacturer: LISUN GROUP  
 Test unit: LED  
 Date of observation: 20231013

### LED Test Report

Rf: 81.6 CCT: 8381K u': 0.1975  
 Rg: 101.0 LER: 0.0 Duv: -0.00451v': 0.4461



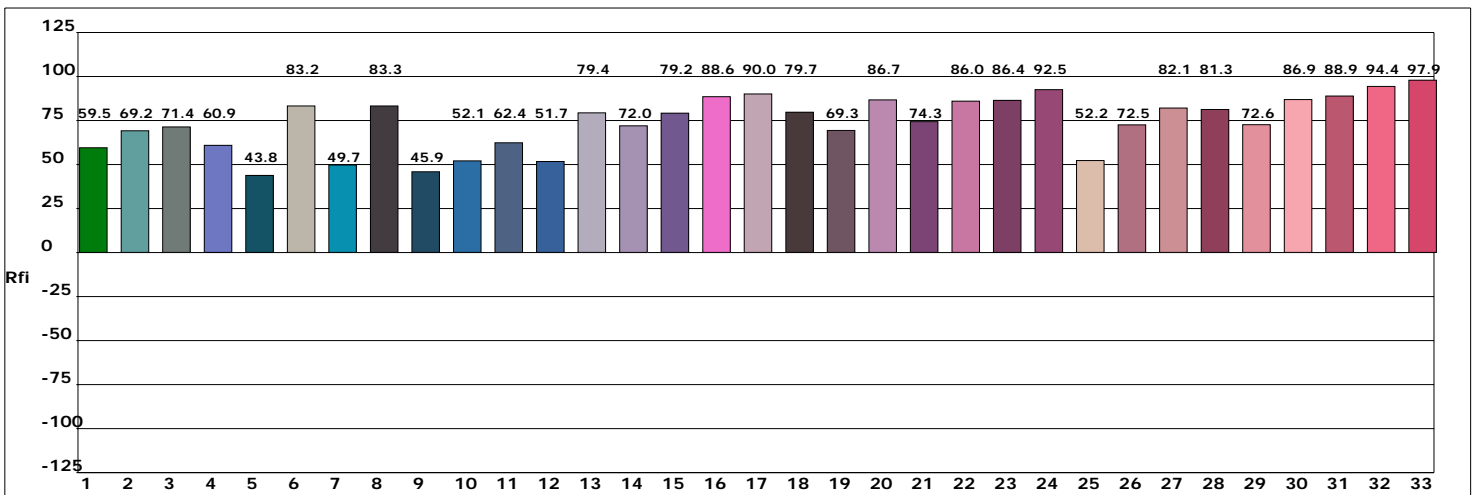
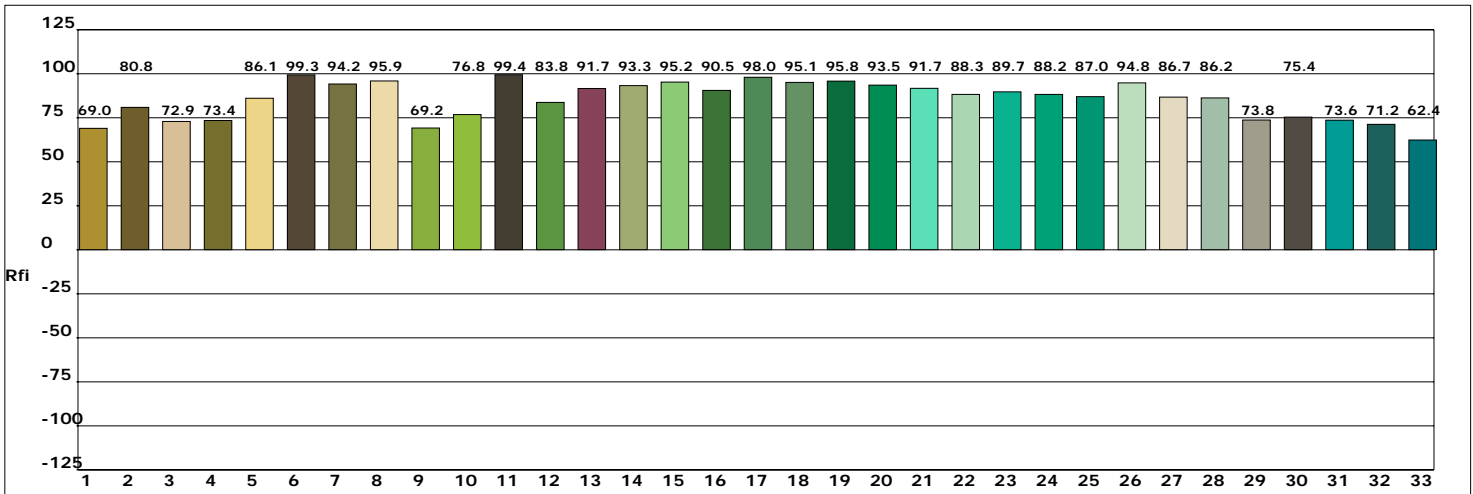
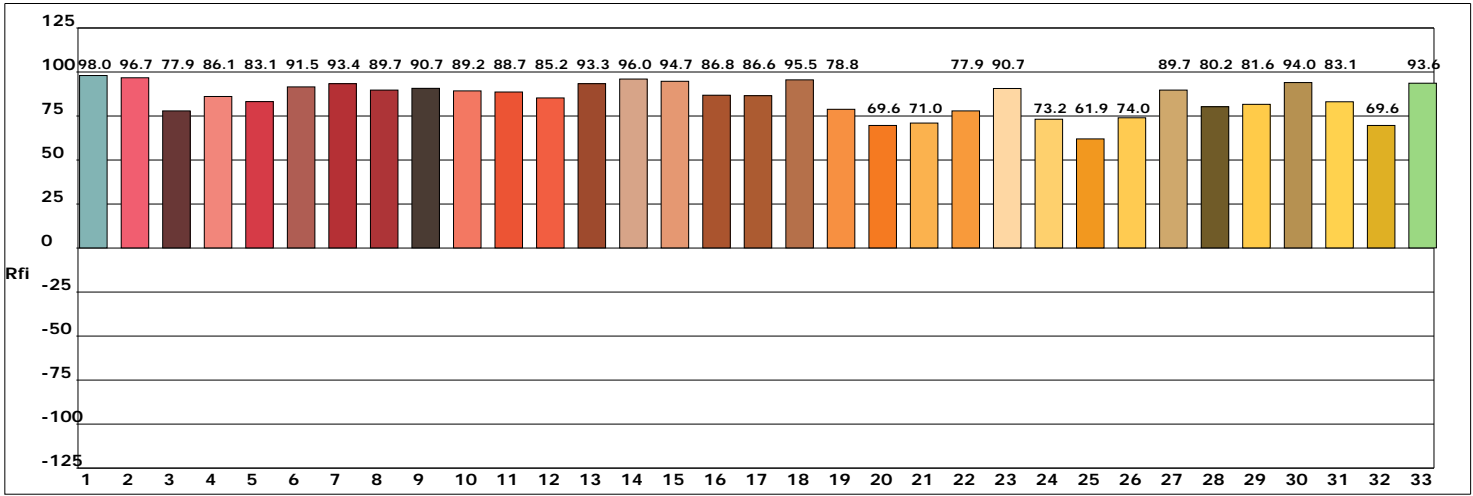
Hue Bin	Rf	Chroma	Hue
1	88.3	-3.8%	-0.6%
2	90.5	-2.7%	3.8%
3	83.5	-1.1%	7.3%
4	78.8	1.0%	10.9%
5	80.3	1.7%	6.2%
6	89.9	4.3%	1.4%
7	96.3	-0.5%	-1.6%
8	84.4	-7.1%	4.0%
9	80.2	-11.2%	13.3%
10	66.7	-6.3%	20.8%
11	52.4	0.3%	21.7%
12	77.6	4.0%	14.4%
13	81.8	9.8%	9.2%
14	88.3	4.4%	2.8%
15	79.1	14.4%	-9.9%
16	94.8	0.9%	-2.3%



Product model: Lisun LMS-6000L  
 Product number: LED  
 Tester: Jacky  
 Remarks: N/A

Manufacturer: LISUN GROUP  
 Test unit: LED  
 Date of observation: 20231013

### LED Test Report



Product model: Lisun LMS-6000L  
 Product number: LED  
 Tester: Jacky  
 Remarks: N/A

Manufacturer: LISUN GROUP  
 Test unit: LED  
 Date of observation: 20231013