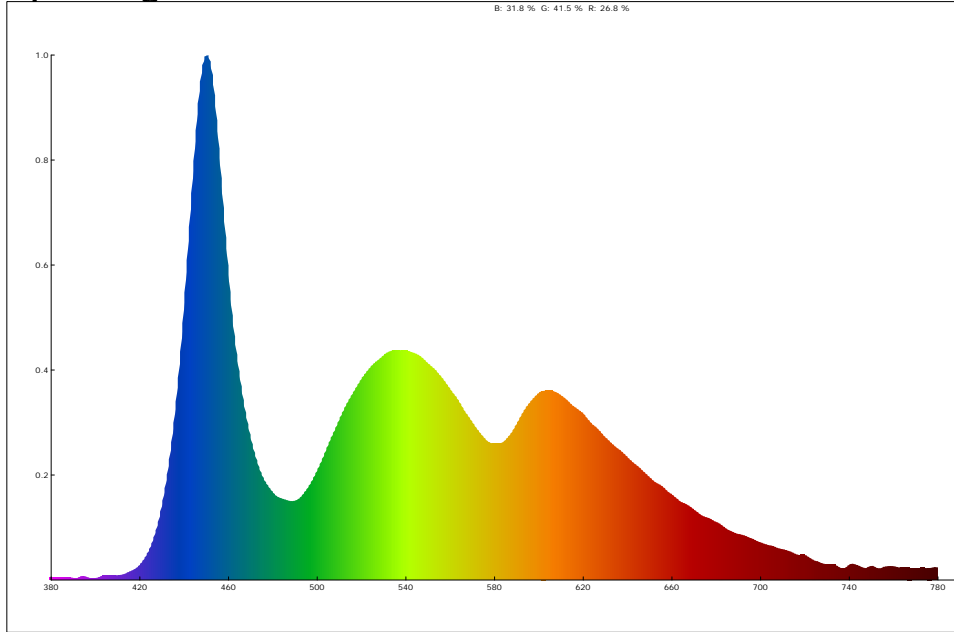
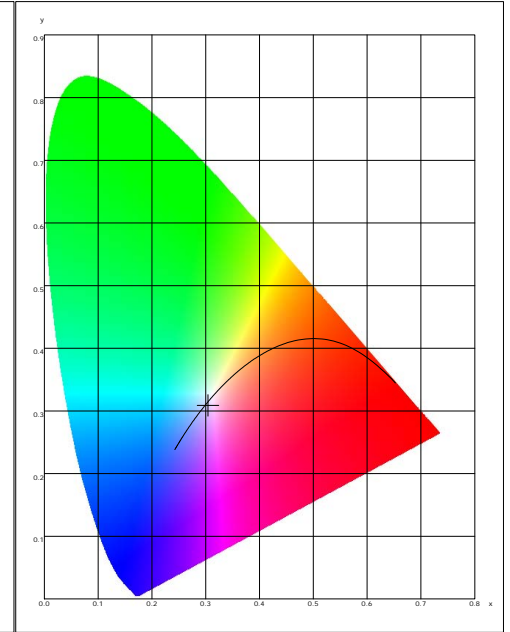


LED Test Report

Spectrogram



CIE1931



Color Parameter:

x: 0.3041 y: 0.3086 u: 0.1996 v: 0.3038 u': 0.1996 v': 0.4557
 CCT: 7266 K R_ratio: 26.8 % G_ratio: 41.5 % B_ratio: 31.8 %

Ra: 88.2 AvgR: 84.8
 R1: 95.8 R2: 89.0 R3: 75.6 R4: 89.2 R5: 92.3 R6: 81.6 R7: 90.3 R8: 92.6
 R9: 77.3 R10: 68.1 R11: 87.4 R12: 54.9 R13: 94.7 R14: 84.7 R15: 98.5

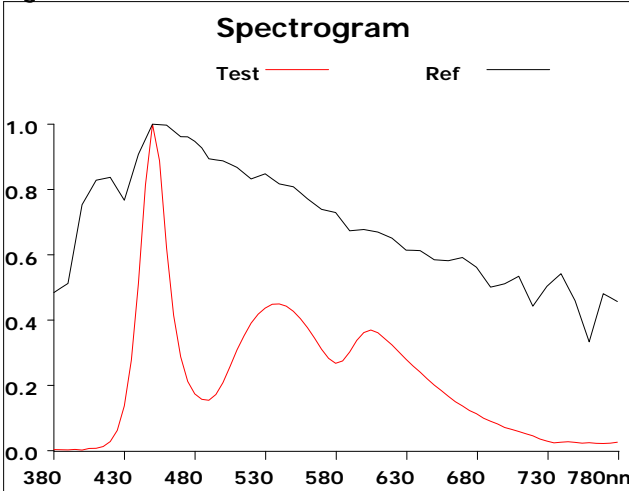
Illum: 102.904 lx	PeakWave: 450.4 nm	CentralWave: 451.1 nm	DominantWave: 479.7 nm
CentroidWave: 544.5 nm	HalfWidth: 22.2 nm	DarkSignal: 5222.0	PeakSignal: 54991.0
purity: 12.1 %	IntegTime: 1022.3 ms	SDCM: 10.1	AvgR: 85.8
duv: -0.00302	Ee: 0.4 w/m ²	fc: 9.5	S/P: 2.3
CIE1931 X: 146.8	CIE1931 Y: 149.0	CIE1931 Z: 187.0	CQS: 82.3
Rg: 102.4	Rf: 82.8	Eavg: 102.9 lx	Emax: 150.1 lx
Emin: 41.4 lx	SamplingTime: 50.0 ms	FluctuationDepth: 51.0 %	FlickerPercent: 54.7
FlickerIndex: 0.2	FlickerFrequency: 300.2 Hz	FlickerIndex: 51.0	MD: 51.0
Transmittance: 100.0			

Product model: Lisun LMS-6000F
 Product number: LED
 Tester: Jacky
 Remarks: N/A

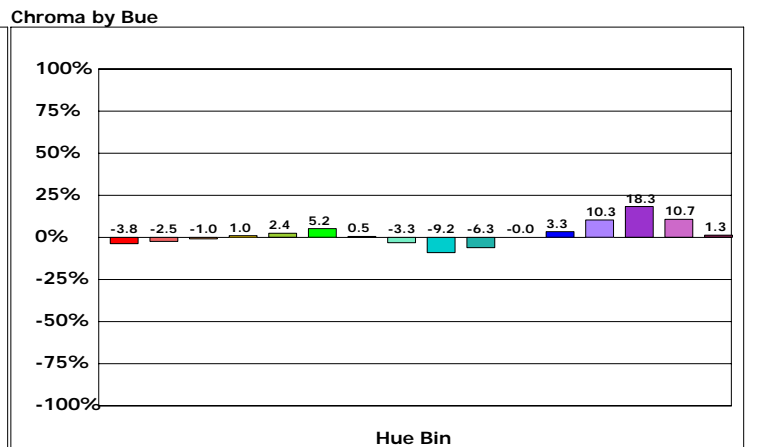
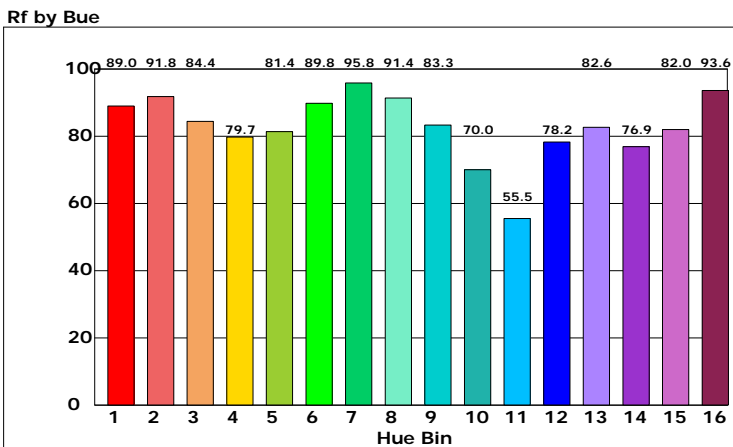
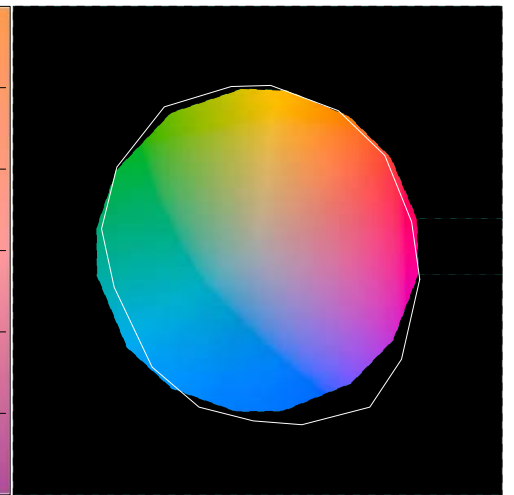
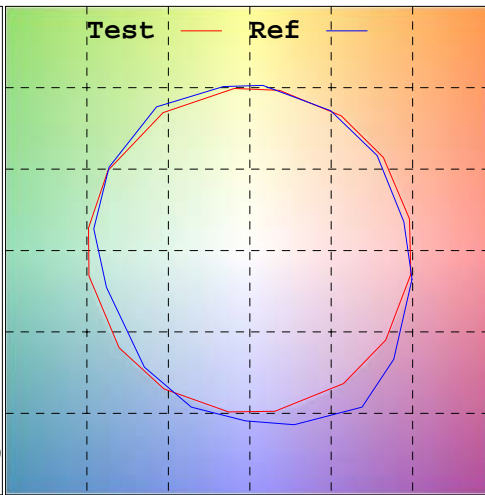
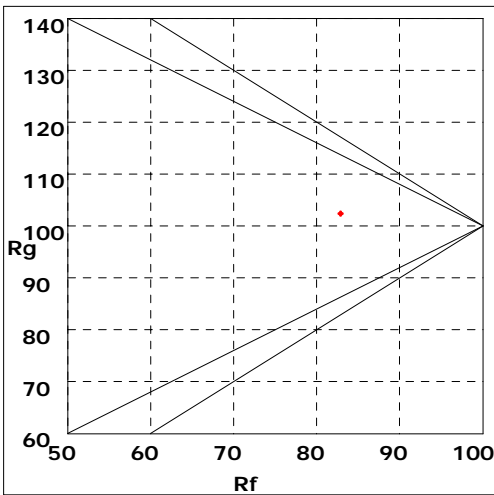
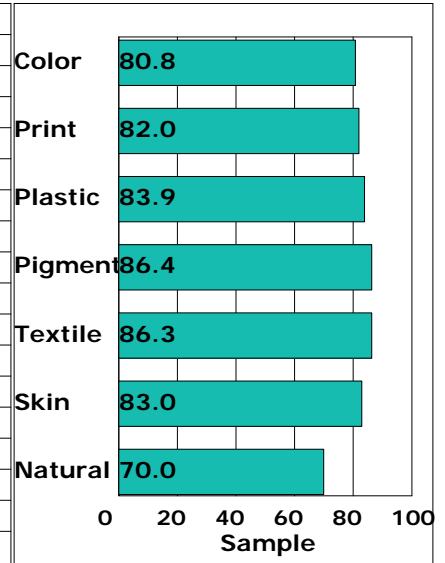
Manufacturer: LISUN GROUP
 Test unit: LED
 Date of observation: 20231106

LED Test Report

Rf: 82.8 CCT: 7266K u': 0.1996
 Rg: 102.4 LER: 0.0 Duv: -0.00302v': 0.4557



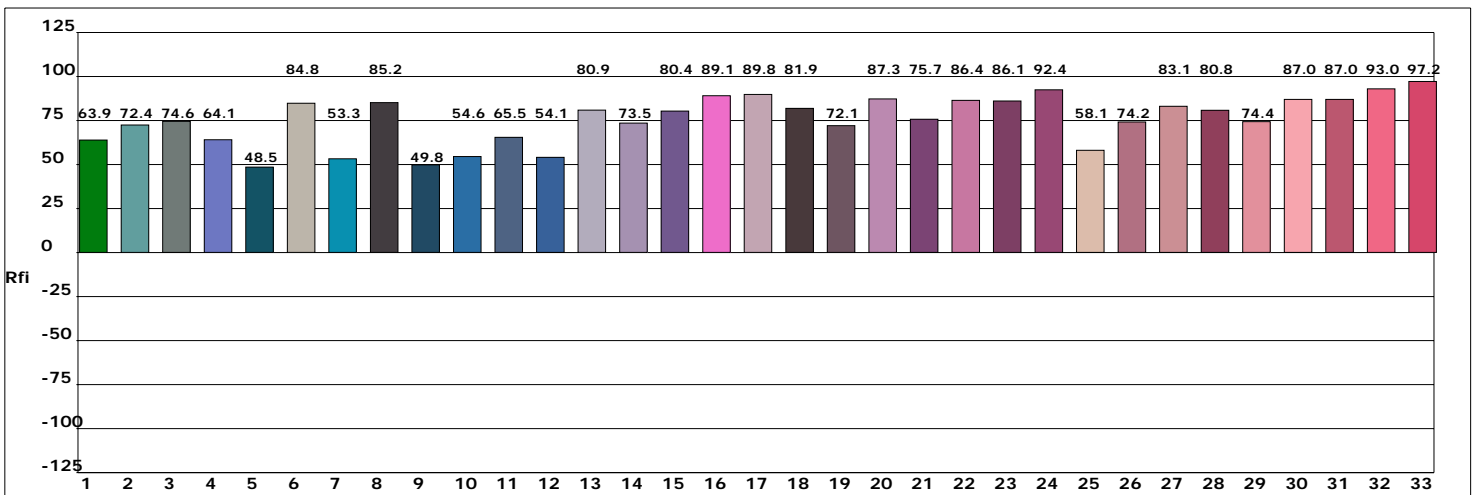
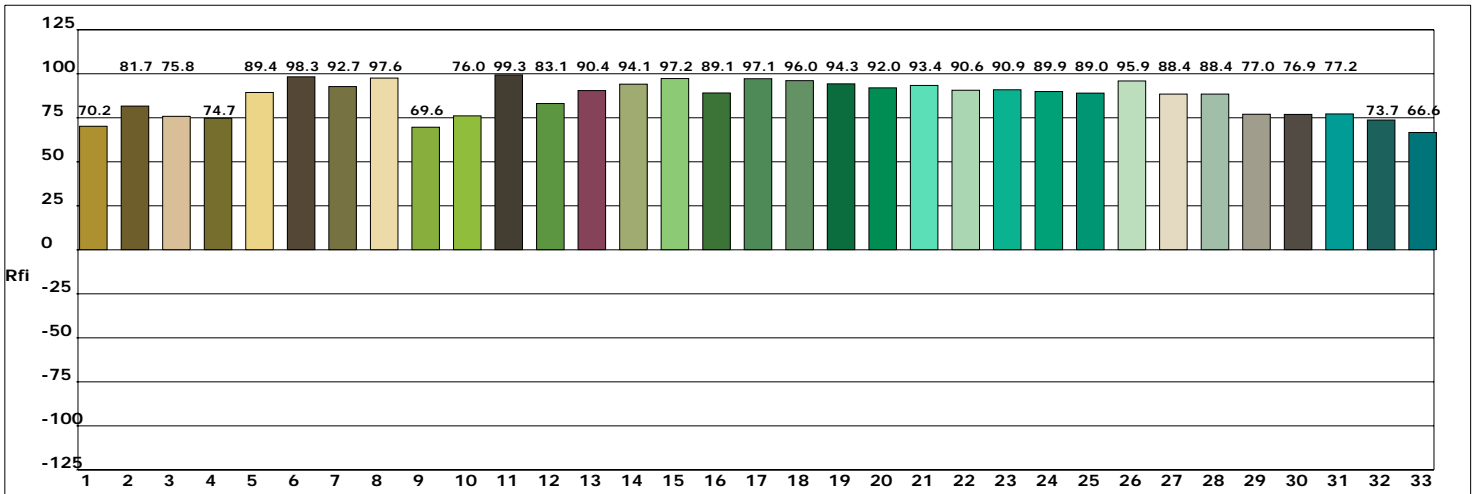
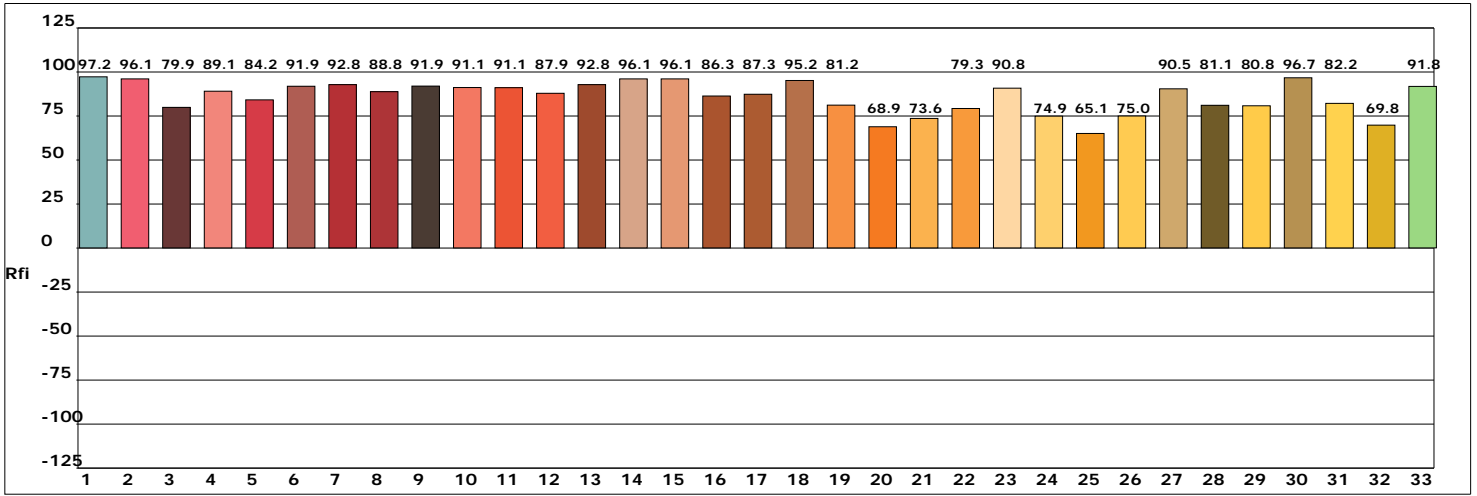
Hue Bin	Rf	Chroma	Hue
1	89.0	-3.8%	-1.1%
2	91.8	-2.5%	3.1%
3	84.4	-1.0%	7.2%
4	79.7	1.0%	10.6%
5	81.4	2.4%	6.4%
6	89.8	5.2%	1.4%
7	95.8	0.5%	-2.1%
8	91.4	-3.3%	-0.2%
9	83.3	-9.2%	8.9%
10	70.0	-6.3%	18.5%
11	55.5	-0.0%	20.2%
12	78.2	3.3%	11.3%
13	82.6	10.3%	9.9%
14	76.9	18.3%	1.4%
15	82.0	10.7%	-7.1%
16	93.6	1.3%	-2.9%



Product model: Lisun LMS-6000F
 Product number: LED
 Tester: Jacky
 Remarks: N/A

Manufacturer: LISUN GROUP
 Test unit: LED
 Date of observation: 20231106

LED Test Report

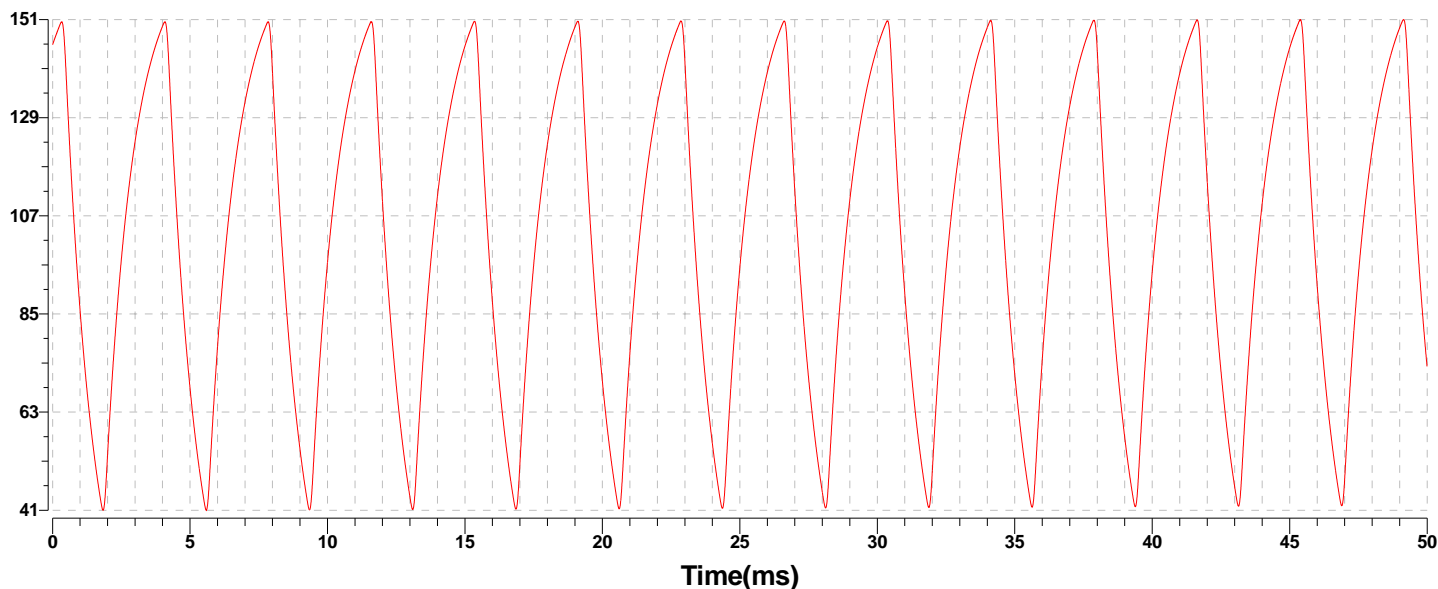


Product model: Lisun LMS-6000F
 Product number: LED
 Tester: Jacky
 Remarks: N/A

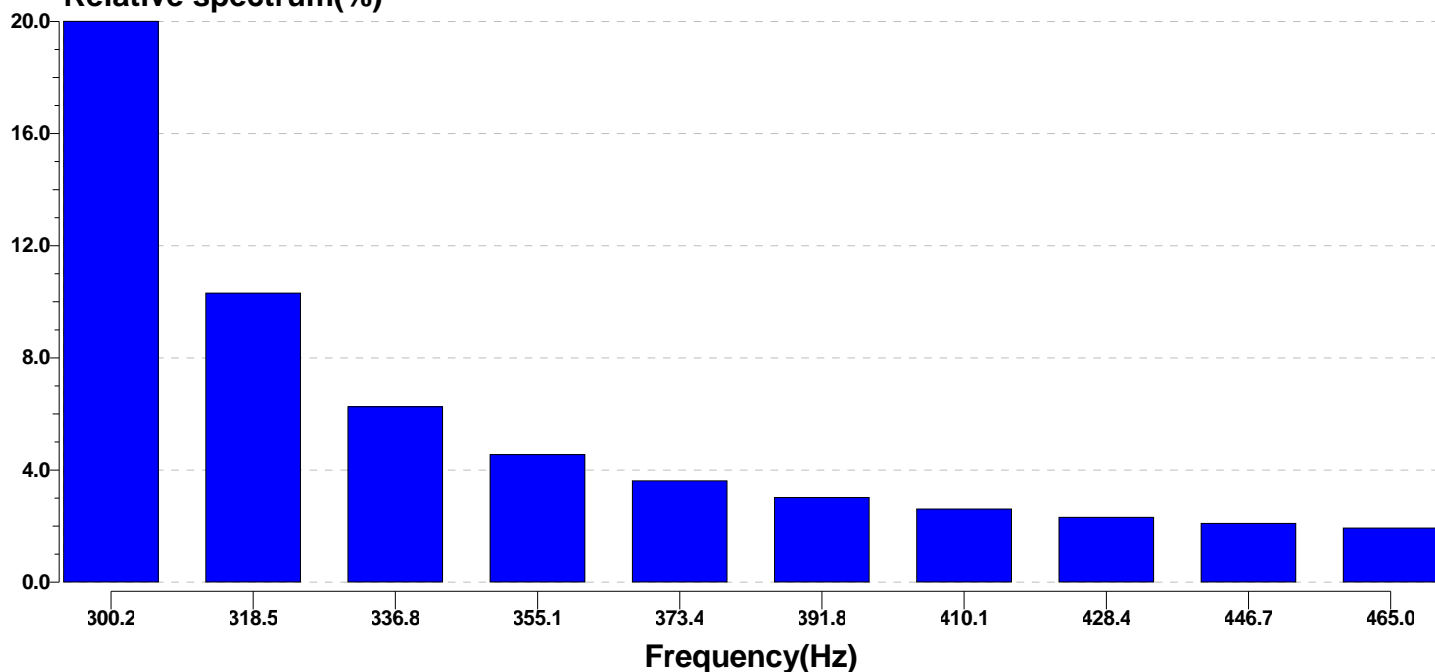
Manufacturer: LISUN GROUP
 Test unit: LED
 Date of observation: 20231106

LED Test Report

Illuminance(lx)



Relative spectrum(%)



Product model: Lisun LMS-6000F
 Product number: LED
 Tester: Jacky
 Remarks: N/A

Manufacturer: LISUN GROUP
 Test unit: LED
 Date of observation: 20231106